

EDEN



Display Home
Homeworld South

\$675,500



REGAL FACADE



FEATURES

- 18 Peregrine St, Catherine Field.
- Long-term lease back available 7.5%.
- Floor tiling to entry, family, rumpus, meals, kitchen, pantry and wet areas.
- Designer bathrooms showcasing modern fixtures and fittings.
- Air conditioning.
- Rheem Stellar 5 star gas hot water system.
- Colorbond roofing with sarking.
- Butler's pantry including stone bench tops, Clark Cellini over mount kitchen sink and mirror splashback.
- Gourmet kitchen featuring Caesarstone bench tops, glass mirror splashback and Baumatic appliances and microwave & dishwasher provisions.
- Blinds, floor coverings and light fittings where installed.
- Excludes: furniture and decor items.

Call 1300 223 345
www.rawsonhomes.net.au

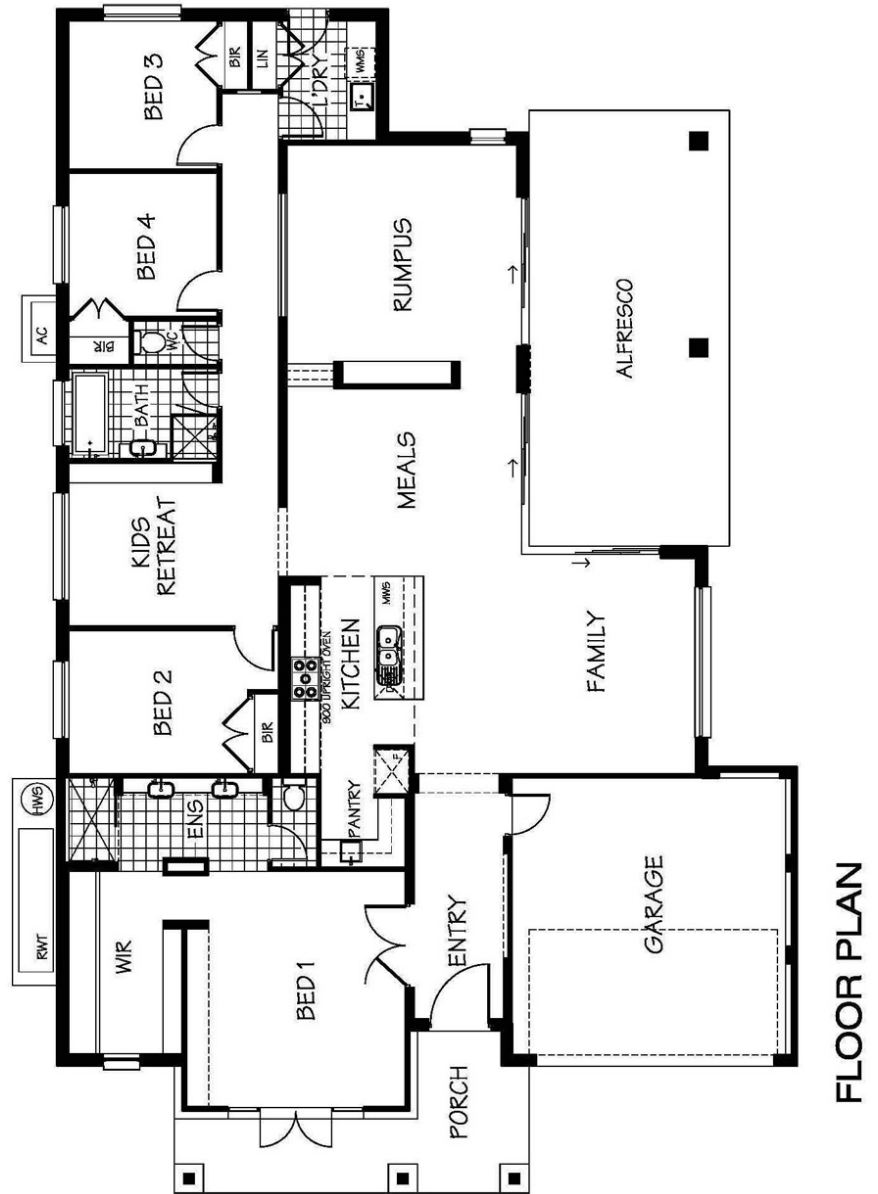


EDEN

Display Home Homeworld South

The Eden is the ultimate in design savvy, mustering together strengths in flexibility and good old practicality for the needs of our daily lives. Aromas of life will bring contentment to your family and friends as they enjoy the open living areas this award winning design delivers so well.

- 4 spacious bedrooms featuring built in robes.
- Master bedroom including walk in robe and ensuite featuring his & her sinks.
- Large open plan kitchen, meals and family area opening onto a large alfresco entertaining area.
- Separate rumpus area.
- Kids retreat area.
- Double garage with internal access.



Call 1300 223 345
www.rawsonhomes.net.au



**RAWSON
HOMES**