

METFORD



Display Home
Homeworld South

\$698,000



FEATURES

- 20 Peregrine St, Catherine Field.
- Long-term lease back available 7.5%.
- Floor tiling to entry, kitchen, family, dining and wet areas.
- Gourmet kitchen featuring Caesarstone bench tops, window splashback, Baumatic appliances, water purifier, microwave & dishwasher provisions and soft close drawers & doors.
- Designer bathrooms showcasing modern fixtures and fittings.
- Air conditioning.
- Blinds, floor coverings and light fittings where installed.
- Roof tiles with sarking.
- Rheem Stellar 5 star gas hot water system.
- Excludes: furniture and decor items.

Call 1300 223 345
www.rawsonhomes.net.au



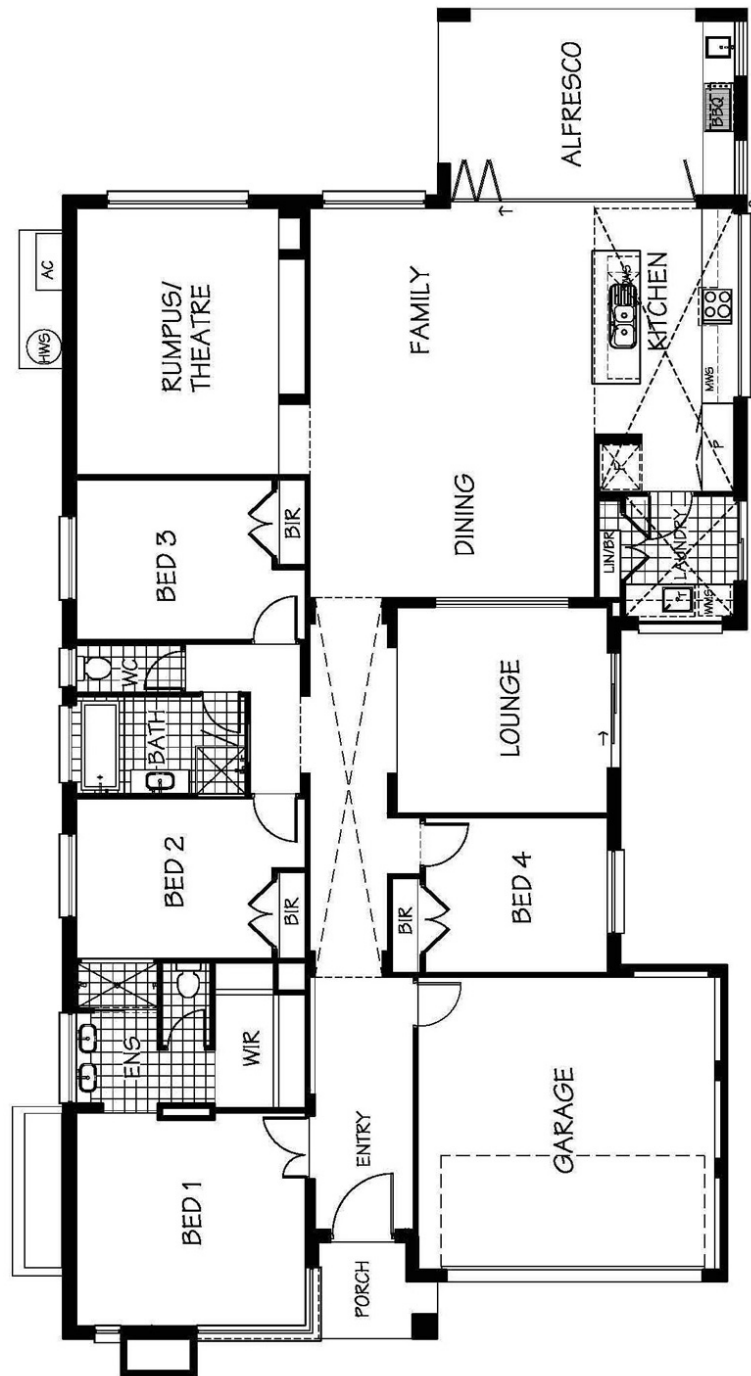
**RAWSON
HOMES**

METFORD

Display Home Homeworld South

The Metford offers the opportunity for lively living from its heart through every nuance of this smart and simply stylish design. Here living melds, merges and provides an open invitation for entertaining be it a simple bbq, elegant banquet or family breakfast.

- 4 spacious bedrooms featuring built in robes.
- Master bedroom including walk in robe and ensuite featuring his & her sinks.
- Large open plan kitchen, dining and family area opening onto a large alfresco entertaining area complete with timber floor boards and cooking area.
- Separate rumpus/theatre room.
- Separate formal lounge room.
- Double garage with internal access.



FLOOR PLAN

Call 1300 223 345
www.rawsonhomes.net.au



RAWSON
HOMES