

# CHIFLEY



Display Home  
Homeworld South

# \$899,750



VOGUE FACADE



## FEATURES

- 16 Peregrine St, Catherine Field.
- Long-term lease back available 7.5%.
- Colorbond roof with sarking.
- Floor tiling to entry, kitchen, dining, family and wets areas.
- Daikin air conditioning.
- Designer kitchen complete with Miele appliances, 3 additional pot drawers, glass splashback, microwave & dishwasher provisions and feature rangehood/bulkhead over island bench.
- Wine cellar fit out to under stairs including wine fridge and clear glazed door.
- Designer bathrooms showcasing modern fixtures and fittings.
- Real Flame Double Vision Decorative fireplace between lounge and dining rooms.
- Blinds, floor coverings and light fittings where installed.
- Rheem Stellar 5 star gas hot water system.
- Excludes: furniture and decor items.

Call 1300 223 345  
[www.rawsonhomes.net.au](http://www.rawsonhomes.net.au)



**RAWSON  
HOMES**

# CHIFLEY

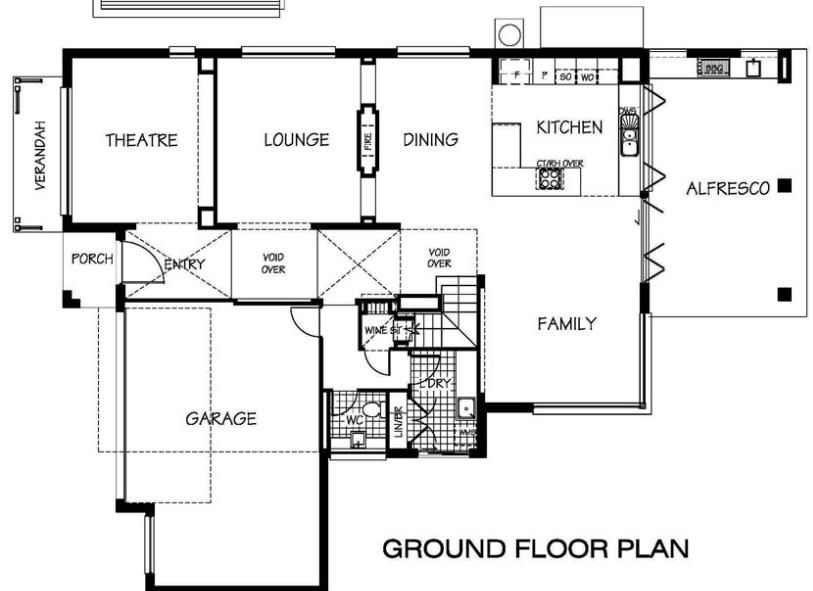
## Display Home Homeworld South

The Chifley has much to crow about, as designer elements of exceptional value all come together in a sublime fusion that creates the perfect family home. This design provides a great mix of private & communal spaces where entertaining will be an absolute must as you liaise between the seamless inside & outside areas.

- 5 generous bedrooms featuring built in robes.
- Master bedroom including parents retreat, walk in robe and ensuite featuring two shower heads and his & her sinks.
- Ensuite and walk in robe to bedroom 2.
- Upstairs lounge area.
- Large open plan kitchen, dining and family area opening onto an impressive alfresco entertaining area complete with timber flooring and BBQ area.
- Bi-fold window with servery between the kitchen and alfresco area.
- Separate formal lounge room.
- Separate theatre room.
- Double garage with internal access.



FIRST FLOOR PLAN



GROUND FLOOR PLAN

Call 1300 223 345  
[www.rawsonhomes.net.au](http://www.rawsonhomes.net.au)



RAWSON  
HOMES