

THE EDGE



Display Home
Homeworld 5

\$1,095,000



FEATURES

- 25 Hartigan Avenue, Kellyville.
- Long-term lease back available 7.5%.
- Air Conditioning.
- Floor tiling to entry, study, kitchen, dining, family and wet areas.
- Designer kitchen complete with Miele appliances, stone bench tops, stone splashback, microwave and dishwasher provisions.
- Purevision 1800 fireplace to downstairs family area.
- Wine cellar fitout including wine fridge, wine shelves, stone benchtops and clear glazed door.
- Designer bathrooms showcasing modern fixtures and fittings.
- Blinds, floor coverings and light fittings where installed.
- Colorbond roofing with sarking.
- Rheem Stellar 5 Star gas hot water system.
- Excludes: furniture and decor items.

Call 1300 223 345
www.rawsonhomes.net.au



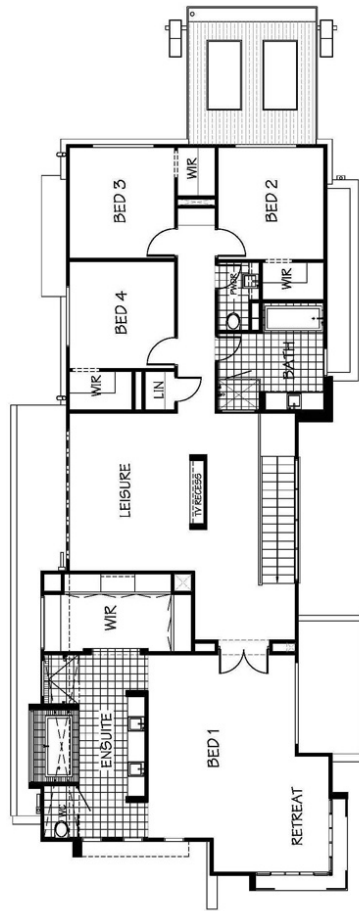
**RAWSON
HOMES**

THE EDGE

Display Home Homeworld 5

Innovative only begins to describe what this design has achieved. This is a design to rock the foundations of what a home could encompass, think light, smart and futuristic and you are on the way. Watch out world, The Edge has arrived.

- 4 spacious bedrooms featuring walk in robes.
- Master bedroom including parents retreat, walk in robe and ensuite featuring his & her sinks.
- Upstairs leisure area.
- Large open plan kitchen, dining and family area opening onto an impressive alfresco entertaining area.
- Separate theatre room.
- Study.
- Double garage with internal access.



FIRST FLOOR PLAN



GROUND FLOOR PLAN

Call 1300 223 345
www.rawsonhomes.net.au



RAWSON
HOMES