

STROUD

 4  2  2  30

23 Whitetip Street
Waterford County

\$653,500



FEATURES

- Generous rental return on a long term lease back.
- Vouge facade including moroka feature to front facade.
- Merbau decking to front porch.
- Designer kitchen including European stainless steel appliances, 900mm underbench oven and 900mm cooktop, twelve pot drawers and glass splashback.
- 20mm stone bench top to bathroom, ensuite and powder room vanities.
- Butlers pantry featuring stone bench top with 70mm edge, Clark Cellini round overmount sink, floor cupboards, laminate shelving and wine rack, wine fridge space and glass splashback.
- Air Conditioning.
- Horizon flat profile roof tiles.
- 2600mm high ceilings and 2340mm high internal doors through (excluding robes).
- Floor tiling, carpet, blinds and light fittings where fitted.

Call 1300 223 345
www.rawsonhomes.net.au



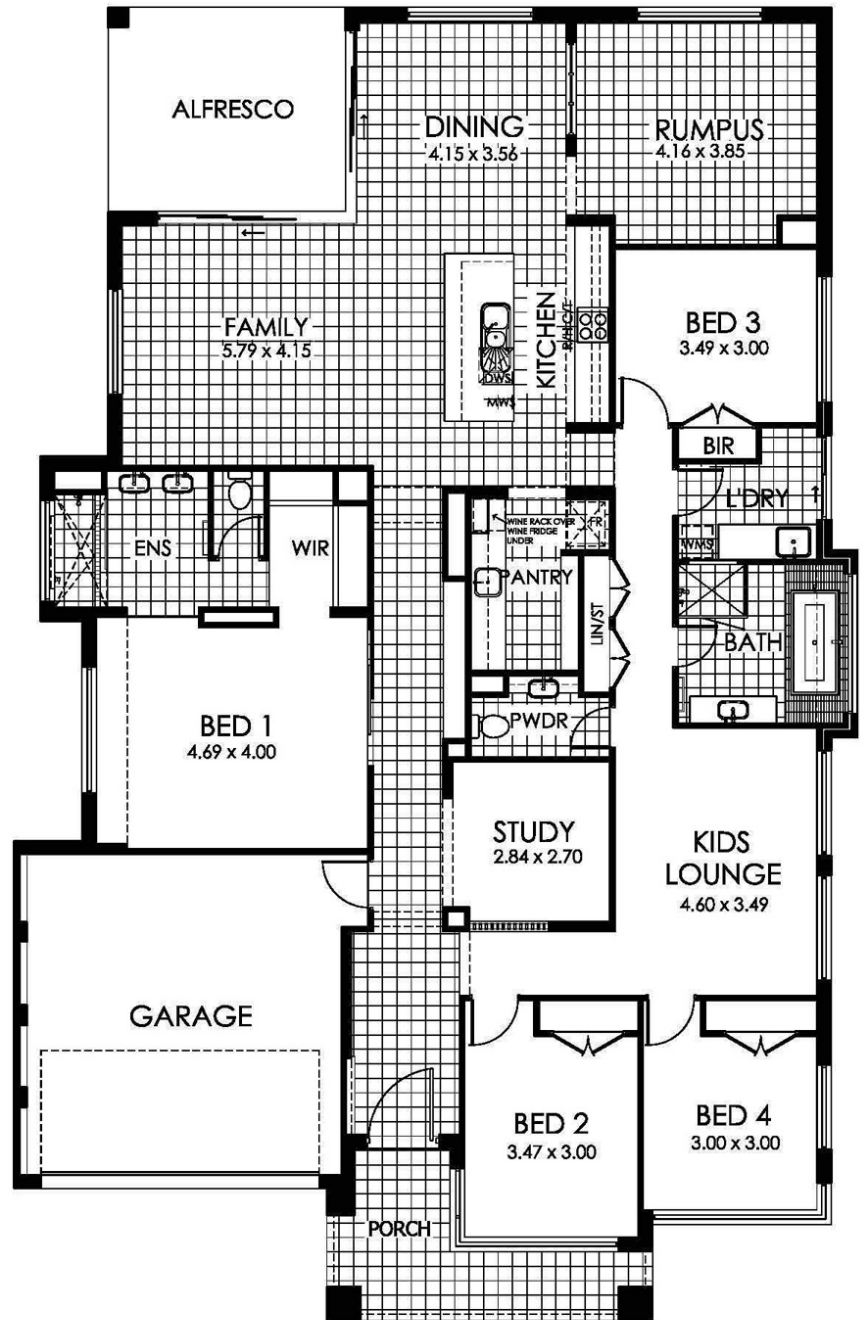
**RAWSON
HOMES**

STROUD

23 Whitetip Street Waterford County

The Stroud melds together the wants of today's living with the things we love into a design that delivers in every aspect. Welcoming, functional and unexpected this is a home that goes beyond the cookie cutter version of so many designs available today.

- Four spacious bedrooms including built in robes.
- Master bedroom featuring walk in robe and ensuite with his and her sinks, fixed panel shower screen and linea grated drain.
- Large open plan kitchen, dining and family area opening onto an alfresco entertaining area.
- Designer bathroom with contemporary fixtures and fittings.
- Study.
- Separate rumpus room.
- Separate kids lounge area.
- Note: Furniture and decor items excluded.



Call 1300 223 345
www.rawsonhomes.net.au



**RAWSON
HOMES**