

METFORD

4 2.5 2 sq 33.3

21 Whitetip Street
Waterford County

\$667,900



FEATURES

- Generous rental return on a long term lease back.
- Majestic facade with Moroka feature to front facade.
- Merbau decking to front porch.
- Gourmet kitchen including 70mm stone bench tops with waterfall ends to island bench, 70mm laminate extension to breakfast bar with waterfall ends, glass splashback, 900mm high overhead cupboards.
- Butlers pantry including 70mm stone bench top, Clark Cellini round overmount sink, two splashback windows, four laminate shelves and floor cupboards.
- Large alfresco entertaining area featuring timber flooring and water feature.
- 2750mm high ceilings and 2340mm high internal doors (excluding robes).
- Floor tiling, carpet, blinds and light fittings where fitted.

Call 1300 223 345
www.rawsonhomes.net.au



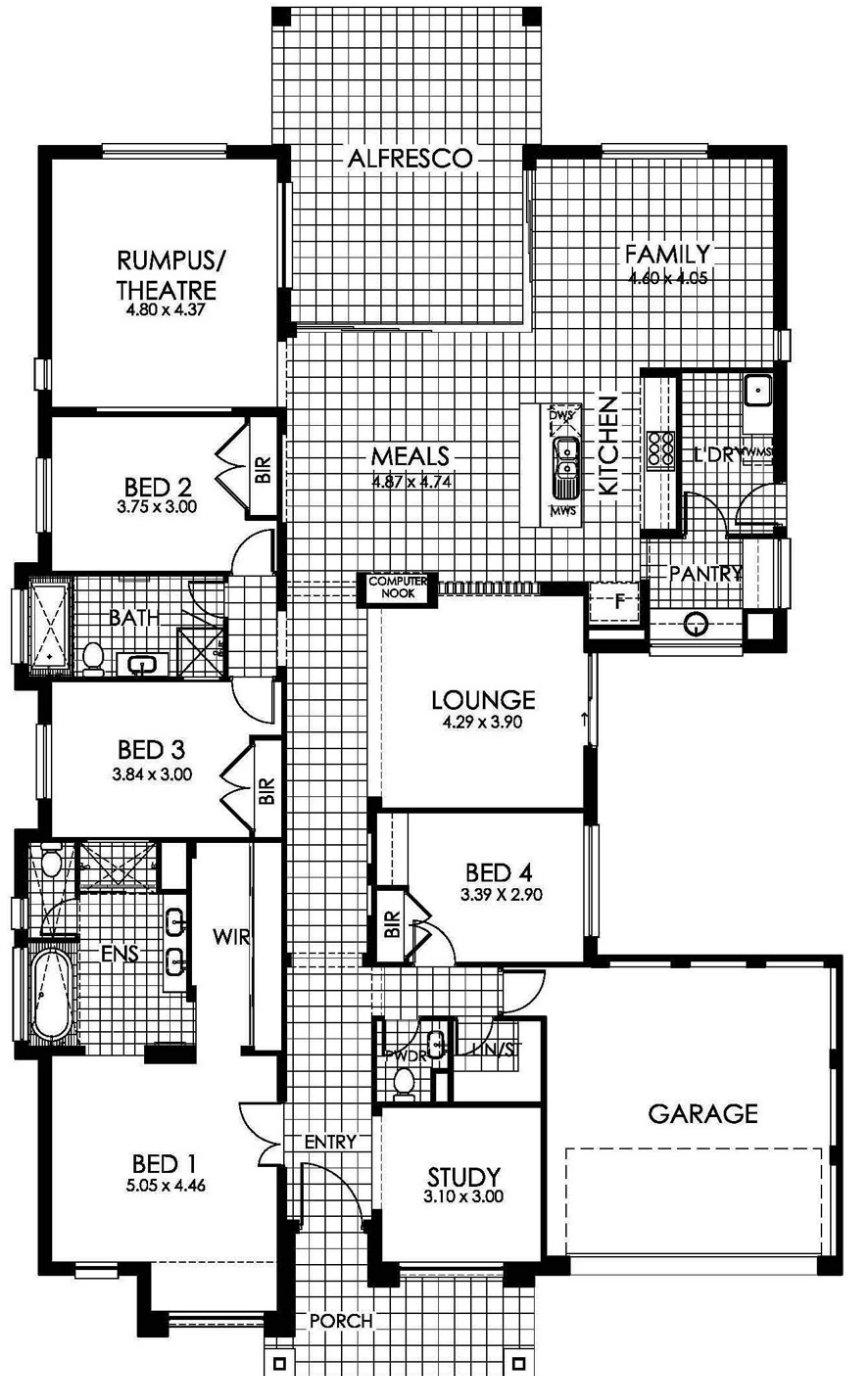
**RAWSON
HOMES**

METFORD

21 Whitetip Street Waterford County

The Metford offers the opportunity for lively living from its heart through every nuance of this smart and simply stylish design. Here living melds, merges and provides an open invitation for entertaining be it a simple bbq, elegant banquet or family breakfast.

- Generous master suite including parent's retreat, ensuite and walk in robe.
- Ensuite complete with his and her sinks, bath tub, fixed shower screen and linea floor grate.
- Large open plan family, kitchen and dining area opening onto an alfresco entertaining area.
- Separate formal lounge room.
- Separate rumpus/theatre room.
- Large study.
- Designer bathroom showcasing modern fixtures and fittings.
- Double garage with internal access.
- Note: Furniture and decor items excluded.



Call 1300 223 345
www.rawsonhomes.net.au



**RAWSON
HOMES**